



## White Cross Newsletter: Summer 2024

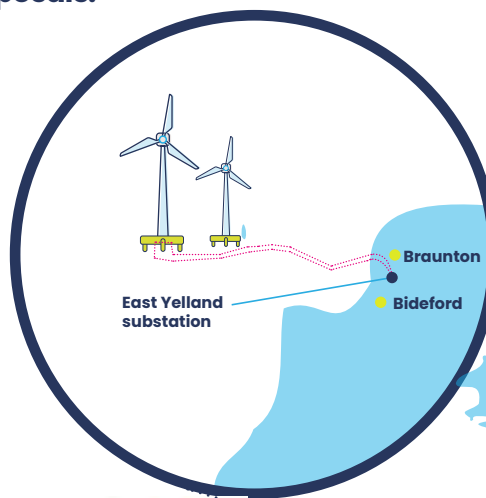
Issue 1

Welcome to the White Cross Offshore Windfarm newsletter, keeping you up to date with the latest information about the project. Inside, you can find information on the statutory consultation on new environmental information provided by the project and updates on our proposals.

### About the project

White Cross is an innovative floating offshore windfarm which will be located in the Celtic Sea. The project will provide 100 MW of secure, renewable energy, enough energy to power the equivalent of over 135,000 households.

This project aims to prove floating offshore wind technology in the Celtic Sea, supporting the development of a local supply chain and providing learnings for future larger offshore wind developments in the area. The project was awarded in 2021 by The Crown Estate through their Test and Demonstration Leasing Round.



100 MW of secure,  
renewable energy



### Community Benefits – we want to hear from you

We are committed to delivering a community benefit scheme in line with UK Government guidance. We have already been working with local people, businesses and organisations to identify key themes and projects that will deliver strategic benefits for the local area, but we want to hear from you too.

If you are involved with a local community group, we would love to hear from you about your priorities for a community benefit scheme and any projects that you are aware of that would benefit from some additional funding. Please reach out to discuss by emailing [hello@whitecrossoffshorewind.com](mailto:hello@whitecrossoffshorewind.com)

## White Cross team in the area: Skills and education

Reskilling, upskilling and attracting a new generation of trailblazers to the innovative and exciting renewable energy industry in the UK will be essential to support the much-needed development of sustainable green energy projects like White Cross.



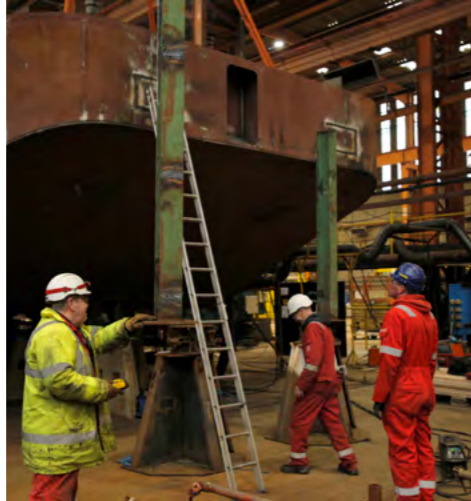
Marine Futures Session

Our White Cross project is committed to identifying opportunities within the local community to support the aspirations of young people in the development of renewable energy skills. Below are some examples of how we are doing this.

- Facilitated a trip for the students from University Centre for Northern Devon / Petroc to visit Flotation Energy's parent company, TEPCO's Inawashiro Daini Hydroelectric plant in Japan.
- Supported the Marine Futures Conference at University Centre for Northern Devon / Petroc by leading a floating offshore wind activity session.
- Sponsored Braunton Academy to participate in the First Lego League, a hands-on Science, Technology, Engineering and Maths challenge for children aged 4-16 years using robotics.
- Delivering school sessions to engage students in the White Cross project and floating offshore wind.



Visit to Inawashiro Daini Hydroelectric plant in Japan



Harland and Wolff

## White Cross team in the area: Supply chain

An infrastructure development like White Cross brings with it opportunity for businesses across a wide range of disciplines. We want to work with as many UK based suppliers as possible to develop our project.



Ilfracombe Harbour

One area that offers long-term opportunities is operations and maintenance. It is beneficial for the operations and maintenance base to be located in close proximity to the windfarm. Recently we visited both Harland and Wolff in Appledore and Ilfracombe Harbour to discuss requirements and understand facilities that are available at these sites. This phase of work begins once construction is complete to ensure that the windfarm is working efficiently and producing as much energy as possible.

**If you are interested in supplying White Cross please fill out the supply chain form on the website at [whitecrossoffshorewind.com/opportunities/](https://whitecrossoffshorewind.com/opportunities/)**

## Public consultation: May 2024

Due to the further work that has been undertaken on the application, we undertook further public consultation in May 2024. Thank you to everyone who has engaged with the project so far, and particularly to those who either attended the public information sessions in May or provided feedback on the proposals. These recent events were very well attended, with over 500 people coming down to the event in person. This gave us a good opportunity to speak with many of you about the project.

### What we heard

From the feedback we have received, the topic that was raised most often was the option of an alternative cable route that does not have any temporary disruption impacts on Braunton and Saunton.

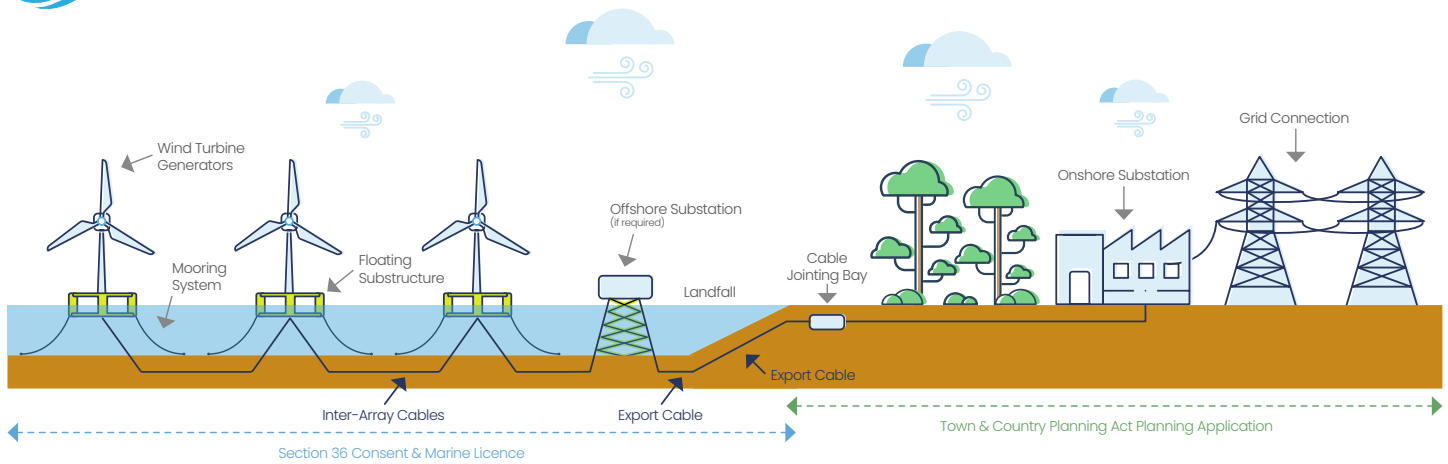
Exploring alternative cable routes was requested in the feedback to minimise traffic through Braunton, not require any utilisation of the car park at Saunton Sands and avoid the important ecology in the area. These topics are consistent with the feedback received from the first round of formal consultation.

**Further detail is provided on these topics in the further environmental information which has been submitted to North Devon Council. This information is available on our website <https://whitecrossoffshorewind.com/documents/>**

## Consultation Overview

The White Cross application was submitted in the August 2023 and subsequently formal consultation with the community was undertaken by regulators in September and October 2023. The consultation highlighted several key topics which are important to local people. Below is a summary of the key themes and what we have done to address these. Much of this information has been submitted alongside further environmental information to North Devon Council.

You said	We did
<p><b>The increase in traffic through Braunton during construction would increase congestion and pollution, damage the roads and reduce road safety.</b></p>	<p>The average increase in overall traffic through the village of Braunton during the construction period is 1%. However, we recognise the concerns about any traffic increase given existing congestion in the summer. We have been working with our construction consultants to minimise the number of traffic movements that will be required and continue to look at alternative and innovative solutions to reduce the traffic.</p> <p>Prior to construction, road condition surveys will be conducted. We will repair any damage cause to the local roads as a result of construction traffic.</p> <p>We will also put a construction traffic management plan in place, including mitigation and management measures agreed with the council.</p>
<p><b>Construction of the cable route will cause damage to the sand dunes and habitats and harm rare plants and wildlife.</b></p>	<p>The cable route has been designed to avoid all protected sites as far as possible. Where this isn't possible trenchless techniques will be used to install the cables under the sensitive surface habitats to avoid damage.</p> <p>A full suite of environmental surveys has been undertaken and these show that there will be no significant adverse effect to habitats and species as a result of the construction work.</p> <p>Surveys of the rare plant, Petalwort, have concluded that no Petalwort was found within the cable corridor and the habitat within the cable corridor is not suitable for it to grow.</p>
<p><b>The construction work will damage tourism and local businesses by increasing traffic, impacting the environment and using space in the beach car park.</b></p>	<p>The project is aware that tourism is an important industry to the local area. Therefore, we have been working with our construction consultants to minimise both the space and time we will be required to undertake the works within the visitor car park.</p> <p>In addition, there will be a compensation scheme in place in line with the compensation code aiming to ensure that no business will be worse off as a result of the project construction.</p> <p>Evidence from a range of recent studies into the relationship between wind developments (both onshore and offshore) and tourism activity shows that windfarms have no measurable effect on the tourism economy.</p>
<p><b>This is not a suitable route for an electricity cable, there must be a better option. Why can't the cable be brought up the estuary?</b></p>	<p>22 onshore cable routes were evaluated to connect the offshore electricity export cable to the national grid connection point. The evaluation balanced environmental, technical and commercial considerations to identify the most suitable route.</p> <p>Several routes utilising the estuary for the cable route were considered, however these routes were deemed unsuitable for cable installation. High tidal flows and sediment movement in the mouth of the estuary would expose the cable if it was trenched requiring extensive rock protection to ensure it remains buried, posing navigation and maintenance issues. Trenching could also harm the environmentally protected estuary, disturbing habitats and releasing contaminants. Drilling the cable route was also assessed but would face insurmountable challenges with geology and crossing Zulu Sand Bank.</p>



## Statutory Consultation on White Cross Offshore Windfarm application

White Cross Offshore Windfarm has followed a split consenting regime due to its size. This means that an application for the offshore assets, including the turbines, substructures, moorings, anchors and the offshore cable is submitted to the Marine Management Organisation. An application for the onshore assets, including the landfall, onshore cable and associated infrastructure and the project substation is submitted to North Devon Council.

Following consultation on the application in September and October 2023, North Devon Council formally requested further environmental information to be submitted in relation to the onshore application. We held a public consultation on this further environmental information in May, and the next stage in the process is for North Devon Council and the Marine Management Organisation

to conduct their formal statutory consultation.

The consultation will consider the new environmental information we have provided. For North Devon Council this consultation will take place under Regulation 25 of the Town and Country Planning (Environmental Impact Assessment) Regulations 2017 and for the Marine Management Organisation under Regulation 26 of the Electricity Works (Environmental Impact Assessment) (England and Wales) Regulations 2017.

The statutory consultation will be run by the respective regulator, for the offshore the Marine Management Organisation and for the onshore North Devon Council. Representations should be made directly to the regulator using the following details to the right.

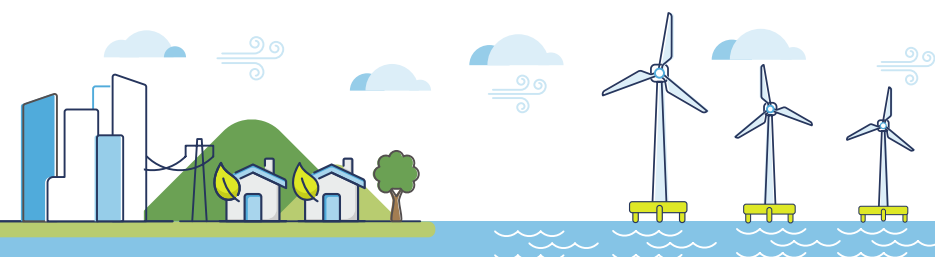
**North Devon Council Case reference 77576:** <https://planning.northdevon.gov.uk/Planning/Display/77576>

• Post – Lynton House, Commercial Road, Barnstaple, EX31 1DG

**Marine Management Organisation Case reference MLA/2023/00113:** [https://marinelicensing.marinemangement.org.uk/mmofox5/fox/live/MMO\\_PUBLIC\\_REGISTER/](https://marinelicensing.marinemangement.org.uk/mmofox5/fox/live/MMO_PUBLIC_REGISTER/)

• Post – Lancaster House, Hampshire Court, Newcastle upon Tyne, NE4 7YH

**The consultation is now open. The relevant documents are available on both the North Devon Council and Marine Management Organisation portals via the links above, as well as on the White Cross website.**



## Get in touch:

If you would like any further information or have any questions about the White Cross offshore windfarm, contact the project team by:



Visiting the website [whitecrossoffshorewind.com](http://whitecrossoffshorewind.com)  
 Emailing [hello@whitecrossoffshorewind.com](mailto:hello@whitecrossoffshorewind.com)